

# Energy Efficient Schools Program

## Changes to the Accounting of PPC Funds and Program Requirements

Presented by ODOE Energy Efficient Schools Program Staff



OREGON  
DEPARTMENT OF  
ENERGY

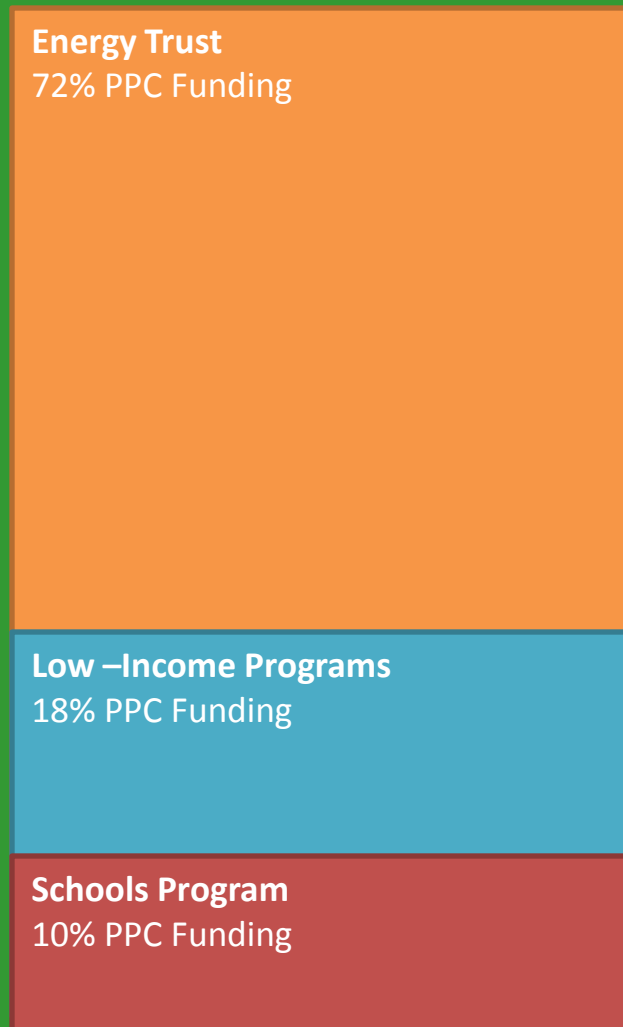
# The Energy Efficient Schools Program

The Public Purpose Charge (PPC) funds the SB 1149 Schools Program

~ \$7.5 Million annually for eligible school districts

840 eligible schools

~ \$60 Million spent on energy efficiency and audits



# What has Changed from HB 2960?

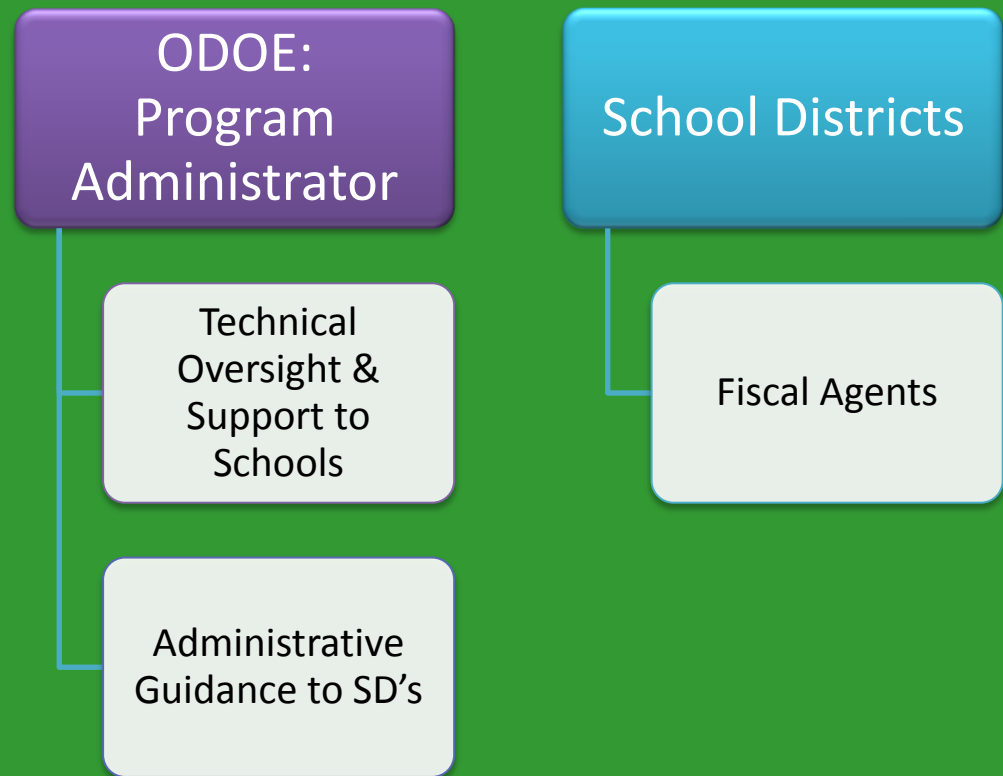
## ONE MAJOR CHANGE

PPC funds will now flow directly to School Districts

Effective Immediately

# The Energy Efficient Schools Program

Key responsibilities within Schools Program



# Program Guidelines

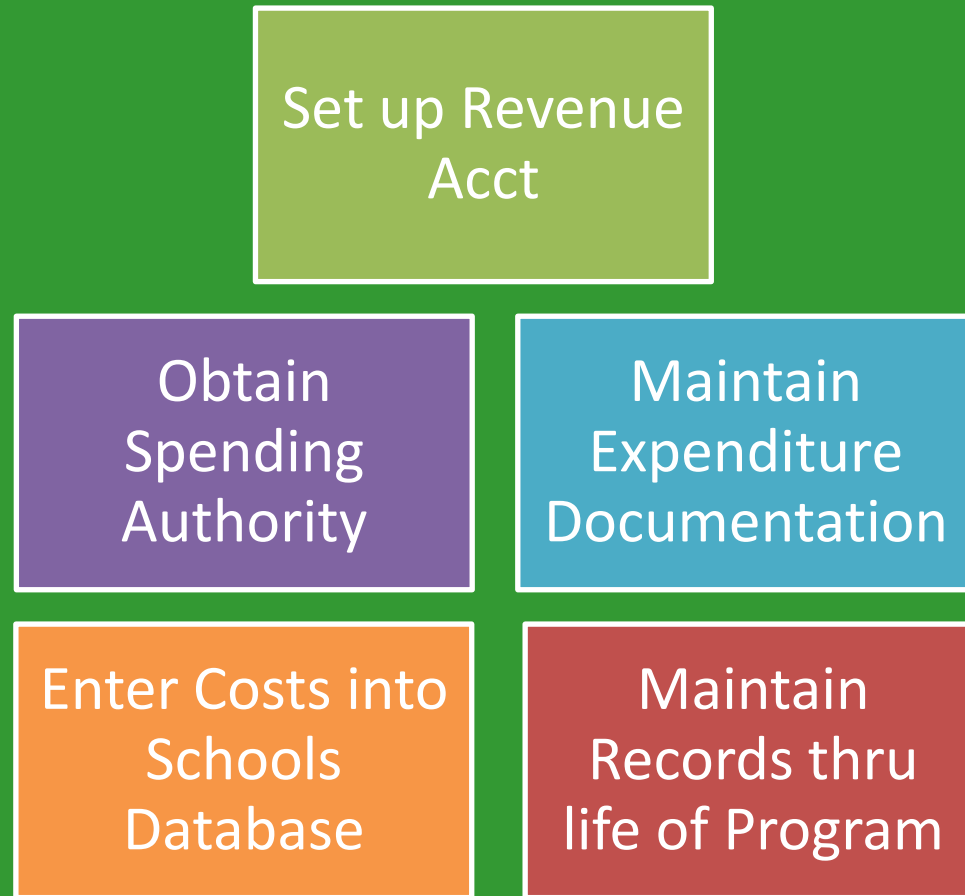
Guidelines updated September 2011 per HB 2960:

1. References to Education Service Districts were replaced with School Districts

2. Financial Requirements amended the Reimbursement section to meet the law

3. Flow charts added to provide clarity on having an audit completed and implementing projects.

# Financial Requirements of Districts



Note: All PPC funds transferred from Revenue Account must be for eligible costs and be recorded in Schools Database

# How is this one change being implemented?

## Utilities filed Temporary Waiver

- Temporarily holding payments to School Districts until training, financial guidance, updated program guidelines are in place and utilities have eligible district account info

## Required Accounting Information for Utilities

- PGE and Pacific Power need accounting information from all eligible School Districts to send PPC Funds

# Required Accounting Information for Utilities

## PGE

- Direct Deposit Form
- W-9

## Pacific Power

- Payment Form
- W-9

# Current District Program Requirements

- Annual Eligibility Reporting
  - Send copy of recent electric utility bill for all educational buildings to Tracey Nguyen at [tracey.nguyen@odoe.state.or.us](mailto:tracey.nguyen@odoe.state.or.us) by October 24, 2011



# Current District Program Requirements

## Continued.....

- Annual Energy Use Reporting
  - Enter annual energy use for each eligible facility into Schools Database by December 31 for prior fiscal year, monthly data can be uploaded through spreadsheet template and is preferred method
- Project Cost Reporting
  - Final projects cost are required to be entered into the Schools Database prior to any reimbursement of funds

The screenshot shows the login interface for the Energy Efficient Schools Program (SB 1149). At the top, there is a dark blue header with the text "Energy Efficient Schools Program (SB 1149)". Below this is a light blue section with the text "Energy Management Center & Program Database". A dark grey bar contains the word "LOGIN" in white. Below the header, there are two input fields: "User ID:" and "Password:". Below the input fields are two buttons: "log in" and "reset". At the bottom, there are two links: "Video Tour of Database Enhancements" and "Calculate Your EUI!".

The screenshot shows the main menu for the Energy Efficient Schools Program (SB 1149). At the top, there is a dark blue header with the text "Energy Efficient Schools Program (SB 1149)". Below this is a dark grey bar with the text "MAIN MENU". In the top right corner, there is a link "log out". Below the header, there are several menu items, each with a description:

- [Facility Energy Management](#)  
Enter annual or monthly energy billing data here. See graphs and pull reports on your energy consumption and payments. Also enter relevant facility information like total square feet, annual hours of operation, etc.
- [Energy Efficiency Audits](#)  
Enter or view energy efficiency audit results of facilities.
- [Actual Implementation Costs](#)  
Enter actual implementation costs of energy efficiency projects.
- [ESD Revenues and Costs](#)  
Enter ESD revenues and costs associated with SB1149.
- [ESD SB1149 Program Status](#)  
ESD's SB1149 program status.
- [School District Administrative Costs](#)  
Enter or view the school district's SB1149 administrative costs.
- [School District SB1149 Program Status](#)  
School district's SB1149 program status.

# What do you need to do Now?

- Download and review updated Program Guidelines
  - [http://www.oregon.gov/ENERGY/CONS/SB1149/Schools/docs/EESP\\_Guidelines.pdf](http://www.oregon.gov/ENERGY/CONS/SB1149/Schools/docs/EESP_Guidelines.pdf)
- Check out the Schools Database
  - <http://legacy.wesd.org/sid/>
  - Contact Christie for login information
- Sign up for Webinar on Schools Database training to learn more

# Timeline

Mid September

Webinars on Program Requirements and accounting information due to Utilities



Late September

Webinars on Schools Database and utility bills due for eligibility



October

Start of rulemaking process to create rules for Program

# THANK YOU

## Energy Efficient Schools Program Staff

JP Batmale (Schools Program Lead) <a href="mailto:jp.batmale@odoe.state.or.us">jp.batmale@odoe.state.or.us</a>	(503) 378-5054
Christie Sphoon (Energy Specialist) <a href="mailto:christie.l.sphoon@odoe.state.or.us">christie.l.sphoon@odoe.state.or.us</a>	(503) 373-7430
Tom Vohs (Energy Analyst) <a href="mailto:tom.vohs@odoe.state.or.us">tom.vohs@odoe.state.or.us</a>	(503) 373-7809
Tracey Nguyen (Program Support) <a href="mailto:Tracey.nguyen@odoe.state.or.us">Tracey.nguyen@odoe.state.or.us</a>	(503) 373-2294

ODOE Website: [www.oregon.gov/energy](http://www.oregon.gov/energy)